

AS SIA
Architectural
Specifier
Market 2023

The Specifier's **GUIDEBOOK**

3rd Edition

By Singapore Institute of Architects





SR CONTOUR LIGHT - PIXELATED




www.luxconex.com

Find us on




SR Contour Lights

Watch Video 



SR SPI + Madrix

Watch Video 

LuxConex Pte Ltd

No. 1 Pemimpin Drive, #09-08, One Pemimpin, Singapore 576151. E. contact@luxconex.com



THE **TOTAL** COATINGS SOLUTION PROVIDER

IN THE BUILDING & CONSTRUCTION INDUSTRY



Infrastructure & Bridges



Oil, Gas & Petrochemistry



Power



Sea Ports



Architectural Coatings



Floor Coatings



Cool-Tec Cool Coatings



Sealants, Adhesives & Fillers

Nippon Paint Singapore produces an ever-expanding range of paints and coatings to meet the diverse requirements of the local building and construction industry. From water vapour permeable coating systems to meet the challenges of rising dampness in ground and basement level decks, floor coating systems covered for food factories, waterproofing systems that protect the buildings from water intrusion to protective coatings that beautify and fortify metal facades and timber structures, we have every surface covered.

In addition, we meet the highly specialised needs of the oil and gas, petrochemical, automotive, civil engineering industries with technologically advanced coatings for

substrates that are submerged in water, in contact with chemicals, and exposed to punishing weather conditions.

Beyond paints and coatings, we supply a comprehensive range of sealants, adhesive and fillers under the highly respected Australian brand SELLERS, now wholly owned by Nippon Paint. Our Building Materials Centre supplies the trade with quality, solid construction materials, from hollow blocks to piping.

In short, we have exactly what you need to build unsurpassed quality and integrity into your next project. For more information, call us at +65 6266 5355 or email customers@nipponpaint.com.sg



Scan Here to Enquire



Ar. Melvin Tan
President, 63rd Council 2023-2024
Singapore Institute of Architects

Welcome Message

Dear Architects and friends from the building specialist trade,

A warm welcome to the 3rd edition of the Architectural Specifier Market (ASM)! It is with great enthusiasm that we come together once again to facilitate a unique and invaluable exchange between architects and building specialists. ASM serves as a nexus, connecting architects with the industry's leading building specialists, who bring forth a wealth of knowledge and a vast array of cutting-edge products. This synergy is what fuels our collective pursuit of excellence and propels us towards achieving our architectural visions.

This event is co-located with SIA Practice Convention 2023, exploring sustainability practice and design. As we navigate the challenges posed by climate change and strive for a more sustainable future, architects have a crucial role to play in incorporating sustainable principles into their designs. By embracing environmentally conscious practices, we can create structures that not only inspire, but also harmonize with the natural world.

As we build our own specialties in our practices, it is our hope at SIA that you bring to your projects greater value and in turn command commensurate fees.

I would like to express my gratitude to all the sponsors, exhibitors, and partners who have generously supported this event. Your unwavering dedication to advancing the field of architecture is truly commendable, and we are honored to have you as part of this event.

Architecture is a noble profession and its with this belief that we chart a path towards sustainable design that will shape the future of our industry and positively impact generations to come.

CONTENTS

- 01** 3A Composites Asia Pacific
Pte Ltd
- 02** 3M Singapore
- 03** Admira Pte Ltd
- 04** Ardex Quicseal Singapore Pte Ltd
- 05** Astrid One Pte Ltd
- 06** B.I.M Pte Ltd
- 07** BAFCO Singapore
- 08** Bathsystem Singapore Pte Ltd
- 09** Decor Singapore Pte Ltd
- 10** Florim Ceramiche S.p.A. SB
- 11** Forintech International Pte Ltd
- 12** Formica (Singapore) Pte Ltd
- 13** Kstone Pte Ltd
- 14** Lamitak by TAK
- 16** Light Basic Studio Pte Ltd
- 17** LuxConex Pte Ltd
- 18** Mitsubishi Electric Asia Pte Ltd
- 19** NIPPON PAINT SINGAPORE CO
PTE LTD
- 20** Pacific Forest Products Pte Ltd
- 21** Playpoint (Singapore) Pte Ltd
- 22** Polygan Design Pte Ltd
- 23** Rockfon (ROCKWOOLBUILDING
MATERIALS (S) Pte Ltd
- 24** ROCKWOOL Building Materials
(Singapore) Pte Ltd
- 25** Signify Singapore
- 26** South Star (Asia) Pte Ltd
- 27** SUNGEI EMAS PTE LTD (OPSH)
- 28** SWITCHZMART PTE LTD
- 29** Tesvila Pte Ltd
- 30** Two Nine Six O Trading Pte Ltd
- 31** Viega South East Asia Pte Ltd





- 🌐 3A Composites Asia Pacific Pte Ltd
- ✉ KhineKhine.Htaik@3acomposites.com
- ☎ (+65) 9109 9305
- 🌐 <https://www.linkedin.com/company/3acomposites-architecture-and-design>
- 📍 300 Beach Road, #10-06 Singapore, 199555 Singapore

ALUCOBOND® is the world market leader for aluminium composite panels. Since the introduction on the market in 1969, the panels have been used above all in architecture and for corporate identity programmes, particularly for façades, wall and roof cladding. The panels are on the one hand outstanding due to the extreme evenness and rigidity, on the other hand we offer excellent formability with simple fabrication techniques. They are available in a large variety of colours, surfaces and formats as well as in various core variations such as a fire-retardant and a non-combustible version. With the comprehensive know-how, 3A Composites supports architects, designers and investors in designing and realizing building envelopes. The brand ALUCOBOND® is produced at the 3A Composites factories in Singen, Germany, Benton in USA, Shanghai in the People's Republic of China and in Pune, India.

ALUCOBOND®



ALUCOBOND® A2 (Non Combustible)

ALUCOBOND® A2 is an aluminium composite panel with a mineral-filled core between two aluminium cover sheets. Due to this property ALUCOBOND® A2 meets the strictest fire regulations and standards while fully maintaining all the possibilities of design. ALUCOBOND® A2 allows simple processing, is impact resistant, break-proof, weatherproof, and above all non-combustible.



ALUCOBOND® PLUS (Fire Retardant)

ALUCOBOND® PLUS is a composite panel consisting of two aluminium cover sheets with a hardly flammable mineral-filled core and has been developed for safety in architecture. ALUCOBOND® PLUS has properties such as surface flatness, formability, resistance to weather and simple processing. With myriad applications, ALUCOBOND® is used extensively for airports, metro stations, railway stations, stadiums, corporate parks, IT parks, high rise towers, malls, etc.

ALUCOLUX®



ALUCOLUX® - Solid Aluminium Sheets

ALUCOLUX® is a coil coated solid aluminium panel with A1-s0, d0 classification as per EN 13501-1 test standard. To maintain high product quality, ALUCOLUX® gets continuous industrial-grade PVDF coating. This process helps maintain colour consistency of the product and renders it non-combustible in compliance with the A1 classification. All ALUCOBOND® surface finishes and colours are possible with ALUCOLUX®. Unique patterns such as embossed wood finish or stone look are possible with ALUCOLUX®.



3A Sandwich Panel System

3A Composites Sandwich Wall System is a globally-used architectural solution that offers insulation, energy efficiency and fire retardancy. The system is composed of high-density non-combustible mineral wool core sandwiched between two layers of aluminium or steel sheets. 3A Composites Sandwich Wall System comes with concealed installation systems to meet the building's aesthetics, wind load, water tightness, airtightness, insulation and fire safety requirements. This system is used as non-load bearing walls and partitions for façade and roofing applications.



- https://www.3m.com.sg/3M/en_SG/architectural-design-sg/
- gwleong@mmm.com (+65) 9669 0273
- [facebook.com/3MSingapore](https://www.facebook.com/3MSingapore) 3MSingapore
- <https://www.youtube.com/3MSingapore>
- <https://www.linkedin.com/company/3m/>
- 10 Ang Mo Kio Street 65, #01-01 Techpoint 569059 Singapore

3M applies science to develop innovations that make lives better, easier and more complete in diverse industrial and consumer industries, all while contributing to sustainable development. 3M employs more than 1,600 employees across manufacturing, research and development, supply chain and business operations based at Ang Mo Kio, Woodlands and Tuas.

At 3M, we are experts in helping you push the boundaries of what's possible through form and function. We work with architects, designers and construction companies to create beautiful and functional spaces. With the building and construction solutions portfolio ranging from the functional building window solar films to design-centric architectural film solutions for glass and interior design, we combine the demands of solid construction with the core elements of good design.

3M™ DI-NOC™ Architectural Finishes



DI-NOC Architectural Finishes resemble natural and other materials to boost the flexibility of your architectural design concept. Choose from over 1000 different designs and textures to wrap curved surfaces, straight surfaces, high surfaces and more while achieving the sleekness of marble or the warmth of wood. The film goes up fast and with less likelihood of error and waste to bring life to existing assets without the hassle of long operational disruption and waste disposal. Made in Japan, DI-NOC Architectural Finishes are resistant to water, stain, chemicals and slight abrasions while complying to the flammability standards for Singapore buildings.

3M™ Fasara™ Glass Finishes



Made from premium polyester film in Japan, 3M™ Fasara™ Glass Finishes can be used in a variety of glass medium to enhance aesthetics and privacy. Choose from over 90 designs ranging from gradation to frosted patterns to suit your needs. Get the look of sandblasted or colored decorative glass, while adding privacy and style to any space. 3M expertise in adhesives ensures you of fast, accurate, beautiful and durable application to a variety of glass substrates. Quick and simple to install, the film also allows flexibility of design change out when the need arises.

3M Building Solar and Safety Films



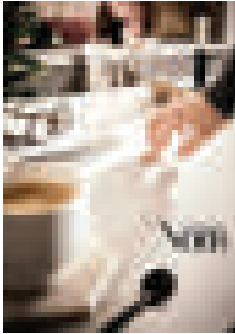
Aesthetics. Comfort. Energy savings. Protection. Take sun control to a whole new level for your building. Sunlight streaming through windows can create excessive heat, uncomfortable hot spots and glare. These issues may impact energy costs, tenant comfort and retention. Prestige Series window films use non metallized, multi layer optical film and nano technology to reject up to 97% of the sun's infrared light and reject up to 60% of the heat coming through your windows. These films also reject up to 99.9% of damaging UV rays to reduce fading of your furnishings. Includes a comprehensive warranty backed by 3M. 3M™ Scotchshield™ Safety and Security Window Films, Ultra Series is our range of clear, micro-layered, tear-resistant films for protection during bomb blasts, vandalism and other heavy impact events. They lessen exposure to flying glass shards – one of the most common injuries during impact events, heighten security and provide added protection against smash and grab burglaries.



ADMIRA

Admira – a pioneer with over 48 years of experience in developing a line of high pressure laminates and fibreglass wall panels combining beauty and functionality for any space. Our creative approach has driven us to constantly seek and curate the latest designs, while providing high-quality and sustainable products that fulfill the diverse demands of an ever-evolving industry. Admira's designs offer endless possibilities for both commercial and residential clients, enabling them to make a lasting impression.

Brilliance Noir



A collection that elevates the bar with its exceptional textural appeal, reliability, and extensive functionality, providing you with the quality you deserve.

Brilliance Noir comes with a variety of features, with the top three being self-healing with the help of heat and friction, anti-fingerprint, and hydro-repellent, making it ideal for high-traffic areas. An ultra-smooth matte that captures light and delivers a flawless surface despite the amount of light reflected on it.

With a thickness of 0.9mm, this surface offers dynamic design versatility and is available in nine attractive colours, thus rendering it suitable as a decorative surface for a variety of interior, architectural, or furniture applications.

CERARL



Create a true sanctuary with CERARL – a lightweight fibreglass decorative panel designed for wall cladding, even on pre-existing walls. These Japanese-made panels come in a range of wood, pattern, and textured designs, with the options recently expanding with innovative designs allowing you to customise your space according to your preferences.

CERARL is waterproof, antimicrobial, and easy to maintain, making it ideal for moist and hygiene-sensitive areas while providing long-lasting protection.

Elevate your space with functional and aesthetically pleasing panels that will last for years with minimal maintenance.

Artistic Panels on Demand (APOD)



Introducing Artistic Panels on Demand (APOD), a revolutionary collection, giving architects and designers the tools they need to express their creativity and turn their visions into reality.

With APOD, you have the freedom to design anything you desire in any size or surface, including plywood, MDF, or particle board. This includes gradients, bespoke artworks, and unique patterns; there will be no more repeated patterns commonly seen in standard laminates.

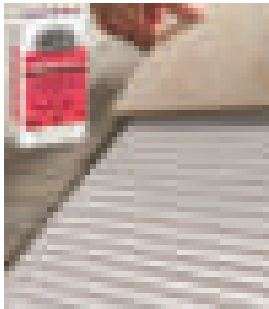
APOD has no minimum quantity limit; laminate only what you need and showcase your creativity with exciting designs.



- ARDEX-Quicseal Singapore Pte Ltd
- emily.ng@ardex-quickseal.com (+65) 9850 5845
- facebook.com/ArdexQuicsealSingaporePteLtd/
- ardexquicksealsoutheastasia @ardex-quicksealsingapore1655
- https://www.linkedin.com/company/ardexquicksealsingapore/
- 7 Eunos Ave 8A Eunos Industrial Estate, 409460 Singapore

ARDEX-QUICSEAL Singapore Pte. Ltd. is a wholly-owned subsidiary of ARDEX GmbH, Germany. ARDEX offering excellent building chemicals with supreme processing reliability - the brand of choice for installers and wholesalers since 1949. We strive to provide an excellent customer experience with comprehensive chemical construction product and system solutions to meet the needs of consultants with superior technical expertise, training plus R&D worldwide. The comprehensive products & system solution includes Waterproofing, Tiling, Flooring, Decorative Surfaces and Civil Engineering segments. ARDEX-QUICSEAL has been independently audited to the Quality and Environmental Management System of ISO 9001:2015 and ISO 14001:2015. We are also corporate member of the Singapore Green Building Council (SGBC) and produced a range of green and environmentally friendly products that meet the needs of the industry.

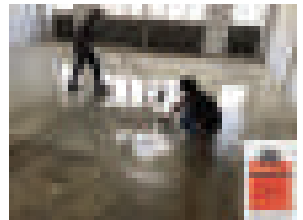
ARDEX X 77 Premium Microtec Flexible Wall & Floor Tile Adhesive



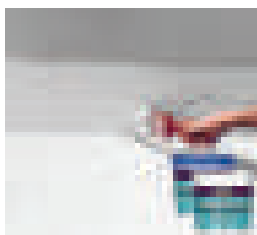
ARDEX X 77 is a high-performance, fibre-reinforced, polymer-modified wall and floor tile adhesive specially formulated with Microtec Technology to give exceptional adhesion properties. When mixed with water, an extremely smooth, creamy mortar is produced with superior slump resistance and double-extended open time. ARDEX X 77 improves and increases the ability of the mortar to be more capable of withstanding stress and shear strain, meaning increased security in the tiling system suitable for use in both internal and external applications. ARDEX X 77 is also recommended for tiling over an early age concrete and screeds. ARDEX X 77 has a reduced risk of efflorescence due to the addition of special additives and is ideal for use in wet areas and swimming pools.

ARDEX CL 11 Commercial Smoothing and Levelling Compound

ARDEX CL 11 have been especially designed to produce a smooth, flat surface when applied to hard, rigid sub-floors such as sand/cement screeds, concrete, etc. ARDEX CL 11 produced a fluid easily trowelled mortar with free-flowing properties when mixing with water. The mixed mortar can be applied up to a maximum thickness of 10 mm or more. ARDEX CL 11 should be used to level and smooth uneven internal sub-floors prior to the installation of resilient flooring. ARDEX CL 11 has been formulated to cater for the high humidities and high ambient temperature that are typical in tropical climates.



ARDEX WPM 300 Water Based Epoxy Moisture Barrier



ARDEX WPM 300 (HydrEpoxy 300) is a two-component water-based epoxy polyamide membrane/barrier coating specifically designed for negative water pressure applications. It is used as a barrier sealing coat over freshly laid or damp concrete before subsequent coating or topping. It also helps to resist negative hydrostatic pressure. Prevents water seepage or damp penetration through the interior of walls and floors in below-grade surfaces such as basements, tunnels, lift wells, retaining walls and tanking applications, including potable water containment - conforms to potable drinking water compliant - AS4020 and SS375.



Astrid One Pte Ltd is an experienced builder dedicated to transforming subterranean termite control in Singapore. With a strong focus on environmental sustainability and the expertise of renowned Australian Entomologist, Ion Staunton, we have developed T-MitePro® as the future of termite control in Singapore. Our company aims to redefine the way termite control is carried out by providing comprehensive, effective, and environmentally responsible solutions.

Unlike traditional approaches to termite control, which often result in the excessive use of termiticides and unnecessary installation of stainless steel mesh barriers, Astrid One Pte Ltd focuses on understanding the intricacies of our built environments and the behaviour of termites. By combining this knowledge with Ion Staunton's expertise and insights, we have developed T-MitePro®, an advanced subterranean termite control system tailored specifically for Singapore.



T-MitePro®

Subterranean Termite Physical Barrier System:
Control without contamination

T-MitePro® uses only a fraction (5%-20%) of the stainless steel material compared to industry norms.

Note:

1. One ton of stainless steel (30% scrap) produces 6.8 tons of carbon dioxide.
2. For illustration, to capture 1 ton of carbon dioxide, an estimate of 50 trees must grow for one year.



**T-MitePro®:
ATMS A1 F**



T-MitePro®: ATMS A1 W



T-MitePro®: ATMS A1 B



BIM is a manufacturer of door ironmongery and accessories. The brand was established in 1993 with the purpose of fulfilling gaps and improving the quality and functionality of existing door hardware in the market. Certified to BS EN (SS 332:2018) standards, BIM strives to provide solutions to various functions of a door set.

Hinges & Handles

Determines the way the door panel is attached to the frame, providing the opening and closing function of a door set and how the door is utilized to perform its opening and closing function.



Security & Closers

Determines accessibility and what happens to the door when trying to open or after it has been opened. Closers ensure that the door returns to the closed position after opening, and the selector/coordinator ensures the inactive leaf closes before the active leaf.



Other ancillary products we provide include door holders, panic devices, auto flush bolts, acoustic seals and fire seals.

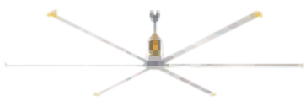


- <https://bigassfans.com/sg/>
- lyon.tan@bigassfans.com (+65) 9732 5095
- <https://www.facebook.com/BigAssFansSG>
- [bigassfansasia](#)
- 50 Ubi Crescent #01-01 Singapore, 408568 Singapore



Big Ass Fans Singapore (BAFCO Singapore Pte Ltd) is a subsidiary of US-based Big Ass Fans, serving as the Asia regional headquarters. Headquartered in Kentucky, Lexington, in the United States, Big Ass Fans which was recently acquired by Madison Industries under IAQ division has been around since 1999 and we are the largest manufacturer of energy efficient fans such as High Volume, Low Speed (HVLS) fans and the popular Haiku fans. Since our founding, we have sold well over 1 million fans to more than 175 countries worldwide and we are one of the most innovative makers of energy efficient fans, holding 305 patents and 150 patents pending. Our LEED Gold certified R&D Laboratory is the only one in the world for testing air movement. Our products are widely used in residential, commercial, and industrial applications. Our line of silent, stylish Haiku fans blew away ENERGY STAR® ratings and won awards worldwide.

Powerfoil D



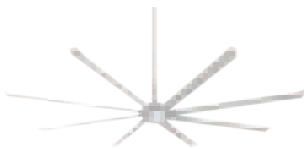
Powerfoil D is our premium direct-drive fan. We built this HVLS fan from the ground up for industrial and harsh environments, and its IP66 rating means it's able to withstand harsh elements like dust and water. Purposefully engineered to transform the way people feel and work within your space, Powerfoil D takes on hot, gritty conditions with ease and has the specs to excel in any facility where comfort and quiet are valued.

Haiku



Handcrafted with premium materials and engineered with cutting-edge smart home technology, Haiku represents the pinnacle in style and innovation for ceiling fans. More than 75 international awards attest to its quality, while its world-leading efficiency makes it the perfect choice for energy-conscious homeowners.

Essence



Essence, the energy-efficient fan that provides quiet air movement with style that perfectly complements your home or business. Available in diameters from 8 to 14 feet (2.4 to 4.3 meters), Essence is the ideal HVLS ceiling fan for residential and commercial spaces. Find it in use in a wide variety of locations from lobbies, pavilions, and fitness centers to seaside dining and open-air theaters. Essence is the best ceiling fan for large spaces, indoors and out.

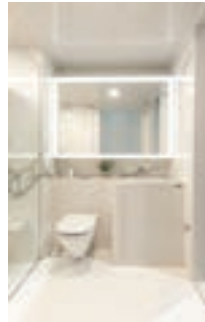


Incorporated in 2013, Bathsystem Singapore (BSS) leveraged on our Principle Solution Provider Bathsystem Italy's technical expertise and their over 30 years' of experience in PBU solutions to achieve Singapore construction industry's long term vision.

With the trust of our valued customers, we have completed more than 10,000 PBUs in Singapore. We thank all our valued customers for the trust and confidence in our high-quality products!

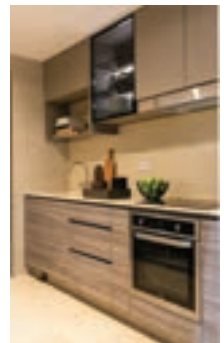
Prefabricated Bathroom Unit (PBU)









Bathsystem PBU is versatile in construction and hence adaptable for varied designs with mass customisation. Bathsystem's lightweight POD Solution can be installed using both vertical and horizontal launch methods.



Prefabricated Kitchen Unit (PKU)

Bathsystem PKU can adapt to all types of residential development projects. Bathsystem PKU customized solutions made to contract and developed in compliance with the project criteria.



-  www.decorfanstore.com
-  contact@decorfansea.com
-  (+65) 6591 8896
-  [decorfansingapore](https://www.instagram.com/decorfansingapore)
-  [facebook.com/decorfansea](https://www.facebook.com/decorfansea)
-  <https://www.youtube.com/@decorfansea>
-  <https://sg.linkedin.com/company/decor-fan-singapore>
-  Oxley Bizhub BLK 65 Ubi Road 1 #03-50 Singapore 408729

Decor Singapore Pte Ltd is a powerhouse in the design and supply of premium ceiling fittings. They offer a wide range of products, including energy-efficient lighting and exquisite decorative fan solutions. With esteemed partnerships from Decor Fan SEA, ERCO Lighting, and Big Ass Fans, they elevate spatial design by curating a range of sustainable materials, including moso bamboo, aluminum, and handcrafted polywood. Their products boast accreditations, such as Singapore SS:655 safety standards and DEKRA IEC CB certification, ensuring their suitability for residential and commercial buildings across Southeast Asia.

Official Partner of DECOR FAN SEA™. Custom Build Fan Solutions.



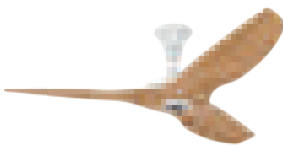
With a dedicated following of 10,000+ homeowners in Singapore, they provide an exquisite range of custom assembly-matched decorative fans. Choose from 10 premium designs made of polycarbonate, aluminum, or artisan poly-wood. These fans fit tight ceilings with industry-leading clearance, offering quiet operation and optimal airflow. Accredited by IPOS, Decor Singapore Pte Ltd guarantees recognized design and top-quality components. Elevate your space with Decor Fan SEA™, the pinnacle of style and performance.

Official Partner of ERCO™. Efficient LED Architectural Lighting



Embrace the transformative power of light that captivates your space, accentuating its finest elements. Guided by triple A principles— architecture, activity, and atmosphere—ERCO lighting crafts bespoke ambiances tailored to your discerning clientele. With exceptional L90B10 accreditation, the high-performance LEDs defy time, maintaining under 10% light depreciation after an astounding 50,000 hours. Featuring patented spherolit lenses, the lighting ensures unparalleled visual comfort and minimal glare. Experience wireless control, soft start, and +-1% true brightness dimming. Seamlessly integrate with popular smart interfaces like Casambi, Dali, and Erco lighting applications. Bringing you lighting that transcends expectations, unveiling extraordinary spaces.

Official Partner of BIG ASS FANS™. Premium Fan Solutions



Unleash the ultimate ventilation solution for your discerning clientele with our cutting-edge, energy-efficient ceiling fans. Accredited by Energy Star standards, these fans embody sustainability while delivering unrivaled comfort and timeless elegance that commands attention from industry leaders worldwide. Brace yourself for the extraordinary H, I, and L series, boasting award-winning design and crafted from premium materials like sustainable bamboo, hybrid resin, and precision-engineered aluminum profiles. Experience the sheer power of Big Ass Fans Solutions, exclusively offered by Decor Singapore Pte Ltd, setting the benchmark for ventilation excellence that leaves a lasting impression.

-  <https://www.florim.com/en/>
-  davide.petucco@florim.com
-  (+65) 9127 9255
-  [florim_ceramiche](#)
-  <https://www.facebook.com/Florim4Architects>
-  <https://www.youtube.com/watch?v=nUW06Mxswlc>
-  <https://www.linkedin.com/company/florim-ceramiche/>
-  63 Mohamed Sultan Road 01-14, Singapore 239002

Inspired by an innate passion for beauty and design, Florim has been producing porcelain surfaces to meet all the needs of the construction, architecture and interior design sectors for over 60 years. Headed by Claudio Lucchese, son of its founder Giovanni Lucchese, the company has a past firmly rooted in the ceramics district and a present as an international industry trendsetter. The Group employs about 1,500 people worldwide and generates turnover of 585 million Euro with the brands FLORIM, CEDIT, FLORIM stone. With state-of-the-art production plants, distribution companies and partnerships in Europe, America and Asia and a number of flagship stores and single-brand showrooms, the company is well positioned in the world's top design districts. Its strategy focused on quality, innovation and sustainability combines with the creative drive and passion of its human resources to transform the value known as "made in Italy" into "made in Florim". After changing its articles of association and becoming a Benefit Corporation, Florim obtained the B Corp certification in 2020.



Florim offers 4 different "Design Expressions", product lines interpreting four different, yet complementary design styles. Luxury design, Creative design, Architectural design and Contemporary design.

Florim's tiles and slabs for wall and floor covering feature a rich array of design solutions in constant, harmonious dialogue. Florim's porcelain stoneware offers also numerous solutions for the construction or covering of swimming pools, spas or wellness centers.



Florim Solutions is the Florim Project Division that stems from the desire to meet the needs of modern architecture to combine the aesthetics of the project with technological and functional performance. The team, made up of specialized engineers and architects, can accompany the designer and the customer from the initial concept selection stage to structural checks and all the way to the realization and installation stage, offering turnkey solutions.

Porcelain stoneware Rainscreen Claddings, Technical flooring and Pools & Wellness are just a few of the solutions Florim offers through a service that manages the project all around.



FLORIM stone is the brand dedicated to the world of decor, countertop and furnishing and combines design and functionality in one large format (320x160 cm) and three different thicknesses (6-12-20 mm). These porcelain stoneware surfaces, produced with a process that is up to 100% sustainable, are the result of Florim's innovation and research activities and boast a long list of certifications.

Forintech

Forintech, your premier provider of high-quality resin flooring materials for demanding environments. With over 22 years of industry experience, we are specialized in PU Screed and Epoxy based flooring systems for industrial & Car Parks scenarios. We offer personalized application consulting services to ensure optimal performance and budget optimization.

Our flagship systems, the Forincrete® Waterborne PU Screed systems, holds international certifications from HACCP, FDA, USDA, CE, and CTC. Trusted by global industry leaders, including Coca-Cola, Pepsi, KFC, Volvo, Hikvision, APTIV, NUS, and much more.

Forintech: flooring tech for the toughest environments.

F&B Processing

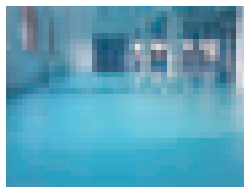


For F&B Processing, our HACCP-certified Forincrete® waterborne PU screed series is designed to meet the rigorous demands of F&B processing facilities. Key features include:

- Comprehensive anti-slip capabilities with 7 textures for optimal safety.
- Impressive durability in wet environments.
- Exceptional resistance to thermal shock (-35 to +155.9).
- Robust chemical resistance, including 60% H2SO4.
- Highest antimold grade for impeccable hygiene.

Pharmaceutical Industry

Forintech offers a range of flooring solutions that meet the GMP requirements for pharmaceutical factories, providing corrosion resistance, high-temperature durability, high load-bearing capacity, explosion-proof features, cleanliness, and low emissions.



- Cleanliness: Our flooring meets pharmaceutical cleanroom standards
- High-temperature durability: It can withstand high temperatures in traditional Chinese medicine production processes.
- Corrosion resistance: The flooring is designed to resist corrosion from potential liquid leakage during material transportation.
- Non-flammable: ESD solution for explosive material/powder workshop

Semiconductor and Electronics



Forintech offer high-spec ESD solutions to protect against discharge, safeguard equipment, and promote safety in the electronic industry:

- 2-4 mm Forincrete® SL/MF-ESD Conductive: Heavy-duty PU screed with good traffic load, high compression strength, abrasion resistance, and low VOC emissions.
- 2mm ForinCrete PU-ESD Conductive (Nano): Surface resistance of 10^4 - 10^6 ohm. Nano material to achieve long lasting ESD performance.



Formica Group is a leading provider of stylistic, smart and sustainable surfacing solutions for commercial and residential customers worldwide. Since 1913, the heritage of Formica Group has been founded on quality, service, and innovative product lines.

As the world's largest manufacturer of High Pressure Laminate (HPL), our sustainability policy is built upon being "good" and having a positive impact on the world around us. Our goal is carbon neutrality by 2030 without losing sight of the product functionality our customers require.

We don't just create physical spaces for you to live, work, and play in. We're passionate about setting the stage for a warm and aspirational future. That's why we take extraordinary care in crafting our surfacing solutions to ensure every detail is crafted to be felt, both by touch and by the heart. At Formica Group, we're dedicated to helping our customers bring their vision to life.

Formica® Laminate



As makers of change, one surface at a time, Formica creates next generation surfaces that bring meaning to your cherished spaces. Made from high-quality decorative papers with the utilization of antimicrobial properties of silver (Ag+), consolidated with specially selected kraft papers fused together under heat and high pressure, this high-performance antimicrobial range is created for protection throughout its lifespan, for hygienic surfaces for you and your family. All Formica® Laminate products are suitable for use in residential and commercial spaces for a variety of applications from cabinetry to shelves, wardrobes to furniture where design, appearance, quality, durability, and resistance to stain from ordinary sources are required.

Formica Cora™



Harmonious in tone, kind to the environment and to your living spaces. Formica Cora™ was designed with five inner core colours, each carefully composed to eliminate traditional dark joint lines for a sleek, elegant finish. This makes it an excellent choice for carpentry-based cabinetry such as wardrobes and shelves where edge-banding is not possible.

With antimicrobial properties that keep odour and contamination at bay, Formica Cora™ collection features abundant variety to yield spaces that are as stylish as they are wholesome, encapsulating all-encompassing beauty that radiates from the inside out.

FENIX®



Introduced in 2013, FENIX® are the innovative materials created for interior design by Arpa Industriale. Thanks to their distinctive technological features and timeless elegance, FENIX provide technical and aesthetic answers to interior design trends.

Created with proprietary technologies, the external surface of FENIX is characterised by the use of next generation acrylic resins, hardened and fixed through an Electron Beam Curing process. This makes you experience unique features. At first glance, the surfaces strike for their super-matt appearance. By touching them, you feel how pleasantly soft they are, with the further surprise of leaving no fingerprints. Thermal healing of superficial micro-scratches is also possible.

KSTONE

Kstone is one of Singapore's leading stone companies.

We import the most premium and finest quality natural stone from around the world and have successfully supplied our stones to multiple iconic and award winning projects in Singapore and overseas. Kstone is also the exclusive distributor of Infinity and Stone Italiana, two leading brands of engineered surfaces from Italy.

Infinity Engineered Surface



Stone Italiana Engineered Quartz



Natural Stone





- 🌐 lamitak.com
- ✉ info@lamitak.com
- 📞 (+65) 6366 1212
- 📘 www.facebook.com/lamitak.studio
- 📷 [lamitak](https://www.instagram.com/lamitak)
- 📺 <https://www.youtube.com/@Lamitak>
- 🌐 www.linkedin.com/company/lamitak
- 📍 14 Senoko Loop Singapore , 758150 Singapore

Established in 1989, TAK Products & Services Pte Ltd (TAK) is a driving force in the region's lifestyle surfaces industry. The company's key brand, Lamitak, which it wholly owns, is highly regarded by industry players and homeowners with its wide choice of high-quality, high pressure laminates. Complementing Lamitak is another wholly-owned TAK brand, NEWEDGE. NEWEDGE offers matching edgebands for Lamitak laminates to realise a seamless finish. Headquartered in Singapore, with regional offices in Singapore, Malaysia, Thailand, China, Indonesia, Hong Kong, and distributors in Myanmar, Taiwan, Korea, Philippines, Australia, New Zealand, and the Maldives. Our presence is a testament to TAK's competent export capabilities and all-encompassing industry know-how experience.

Lamitak has achieved GREENGUARD GOLD, GREENGUARD certification for indoor air quality and SINGAPORE GREEN LABEL certification for low emissions and low toxicity, making it an ideal choice for Residential, Hospitality and Commercial Projects. Discover the new collection at lamitak.com

Lamitak Vol. 1, 2023/24



The new collection, titled "Intervention" is Lamitak's most concise collection of high pressure laminates, featuring over 55 new designs, tallying up to 423 laminates across four categories - Woods, Solids, Patterns and a recently formalised section, Specialities (Protak, Solid Core and Bookmatched).

To request for the latest catalogue or presentation, contact us at sales.dept@tak.com.sg

Protak by Lamitak



The Protak high pressure laminates give you everything you want and need in a surfacing material. A wordplay on 'protect', the Protak collection is a solution-led surface for individuals who place particular importance on surface finishings and wellness.

- Anti-fingerprint
- Anti-bacterial
- Anti-fungal
- Scratch-resistant
- Stain-resistant
- Anti-glare

NEWEDGE

NEWEDGE by Lamitak is an eco-friendly, durable ABS (Acrylonitrile Butadiene Styrene) edging that seals and protects any carpentry projects. It can be used with contrasting laminates for a dynamic interplay of colour and texture. An aesthetic solution with anti-bacterial properties, NEWEDGE complements matching laminates for a seamless perfection of detail.



Lamitak

Inspiring sustainable spaces for a better planet



High Pressure Laminates

Application for Wall Cladding | Cabinetry | Kitchen & Vanity | Furniture | Possibilities

lamitak.com



For more than 16 years, we have been focusing our craft on providing lighting solutions that can enlighten and enhance our clients' quality of life— as they work, live and play. We are a Singapore-based firm that focuses on delivering innovative lighting solutions. Since our founding in 2008, we have delivered hundreds of successful projects to our distinguished clients.

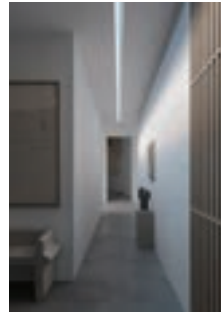
Beyond our integrated in-house capabilities, we have collaborated with top-tier architect firms, award-winning designers, global lighting manufacturers, and consultants in the various residential, workspace, retail, hospitality, commercial, museum, and public spaces in Singapore and South East Asia.

We are well supported by great selections of lighting products from our distinctive Brand Partners to match your taste, requirements and budget.



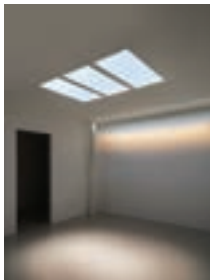
CoeLux HT25

CoeLux HighTech 25 advanced technology reproduces the sky and natural daylight in any indoor space



CoeLux SkyLine

The new CoeLux SkyLine faithfully reproduce natural daylight through a minimalistic linear product



CoeLux SmartSky Technology

CoeLux SmartSky circadian technology recreates the physics of natural daylight from dawn to sunset



- www.luxconex.com
- contact@luxconex.com (+65) 6996 3314
- <https://www.facebook.com/luxconex> [luxconex](https://www.instagram.com/luxconex)
- <https://www.youtube.com/c/LuxConex>
- <https://www.linkedin.com/company/luxconex>
- #09-08 One Pemimpin, 1 Pemimpin Drive, 576151 Singapore

LuxConex is an international lighting manufacturer headquartered in Singapore. We market our luminaires through our own brand, SR®. We take pride in our design engineering, ensuring both performance and reliability, while incorporating market requirements into our products. Our SR luminaires cover market specifications across the world in over 17 countries.

Lighting has a significant impact on our daily activities. Optimal lighting boosts productivity, enhances mood, and makes tasks more enjoyable. Lighting design is both creative and technical, a merging of art and science. LuxConex illuminates connections by bringing the most refined, novel, and reliable lighting solutions to the market.

SR Contour Light Auras



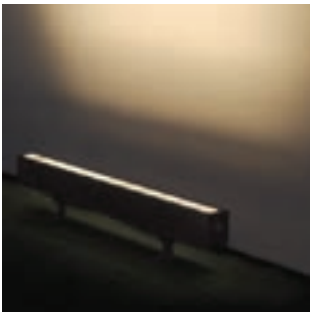
The SR Contour Light family provides completely dot-free illumination, ensuring the highest uniformity with seamless illumination even at joins for design continuity. The Auras are available for both horizontal and vertical bending in the same form factor without any color temperature shift. With monochromatic or dynamic white, RGB, RGBW, and pixel control, there is flexibility in lighting design. The Contour Lights can function under extreme conditions at an ambient temperature of 65°C, thanks to the efficient thermal dissipation design. They have been tested to IEC, EMC, and Ingress Protection standards by TÜV SÜD PSB.

SR Tubo LED Projector Light



The SR Tubo is a versatile yet compact LED projector for landscape lighting. Designed by our seasoned lighting professionals, the Tubo offers optimal light output and is packed with a wide range of accessories for application-specific lighting. The Tubo made its debut in the Inner Growth Tropical Sanctuary designed by Christian Jenkins, Gold Award winner of the Singapore Garden Festival 2022.

SR Blaze LED Linear Wall Washer



The SR Blaze provides continuous and uniform light output for side-by-side installations of up to 5 meters. This linear light is specifically designed for wall washing, grazing, and linear flood lighting, with optimized optics. The deep recessed LED and MicroLouvre® provide excellent glare control to illuminate in architectural lighting.



Changes for the Better

- www.mitsubishielectric.com.sg
- sales.le@asia.meap.com (+65) 6473 2308
- www.facebook.com/MitsubishiElectricSG
- www.linkedin.com/company/mitsubishielectricsg
- 307 Alexandra Road, Mitsubishi Electric Building Singapore, Singapore 159943

Mitsubishi Electric Asia is a subsidiary of Mitsubishi Electric Corporation, a world leading manufacturer of products ranging from home electronics, industrial and factory automation, space systems, public utility systems, semiconductors, and devices. Since incorporation as Melco Sales Singapore in 1977, Mitsubishi Electric Asia has been providing reliable, high-quality products to homes, businesses, and industries in Asia Pacific.

Located in Singapore, we seek to be established as a marketing and engineering hub with its well-networked and strategic presence in the region. At Mitsubishi Electric Asia, we live by our pledged commitment to change for the better with every move we make.

Starmex Series



Mitsubishi Electric's latest range of Starmex series air conditioners uses low Global Warming Potential (GWP) R32 refrigerant to provide a cost-effective and versatile cooling solution for any space. With cutting-edge technology and industry-leading energy-saving features, Mitsubishi Electric air conditioners offer optimum performance with noise suppression. It has wide range of 5 ticks models that offers maximum energy savings. It features easy clean technology, which doesn't require any additional special tools. The Starmex series has high-efficiency filters (PM2.5) and Dual Barrier Coating technology to improve the air quality in your home.

City Multi Variable Refrigant Flow











Mitsubishi Electric's City Multi VRF air conditioning systems offer the luxury of distributed airflow and the independent control of indoor units. Installation flexibility and a wide selection of indoor unit designs and outdoor unit capacities ensure "best match" solutions for air conditioning needs, even for the most diversified requirements. Consideration for the environment during development has led to the manufacture of powerful, compact units that consume minimal energy, have a high coefficient of performance (COP) and contribute to maximum room comfort.

Climaveneta Oil-Free Centrifugal Chiller



The TWM-4 HFO is a state-of-the-art water-cooled chiller designed for comfort cooling applications. It utilizes Turbocor technology (magnetic oil-free), enabling all models in its range to achieve exceptional energy efficiency. Additionally, the TWM-4 HFO incorporates the use of an ecological refrigerant known as HFO R1234ze, which boasts an incredibly low GWP (global warming potential) and does not harm the ozone layer. In addition to its eco-friendliness, the TWM-4 HFO also features a compact design that allows for more flexibility in system design and space-saving benefits. This unique combination of cutting-edge technologies and sustainable practices makes the TWM-4 HFO an ideal choice for modern, environmentally conscious cooling applications.

-  www.nipponpaint.com.sg/trade
-  customer@nipponpaint.com.sg  (+65) 6265 5355
-  www.facebook.com/NipponPaintSingapore  [nipponpaintsg](https://www.instagram.com/nipponpaintsg)
-  <https://www.youtube.com/NipponPaintSingapore>
-  <https://sg.linkedin.com/company/nippon-paint-singapore>
-  1 First Lok Yang Road Jurong Singapore 629728



Nippon Paint (Singapore) Co Pte Ltd is an affiliate of Nippon Paint Japan – one of the most established pioneers in the paint industry with more than 120 years of experience in paint technology. Established since 1962, Nippon Paint is now one of the leading paint manufacturers in Singapore.

Combining research and development with in-depth local market understanding, we provide end-to-end solutions for virtually all kinds of painting needs – from home furnishings, high-rise buildings, factories to numerous industrial applications.

Guided by our core values of integrity, resourcefulness and drive to achieve excellence in everything we do, we have and will continue to deliver innovative products and services to protect and beautify our surroundings.



Floor Coatings for Food & Beverage Industry

In food processing and manufacturing environment, floors are subjected to extreme temperature stress from minus 40 degree Celcius to over 120 degree Celcius which can result in coating system failure. Floors are also subjected to direct and constant contact from foot traffic, equipment and so on which can result in bacteria contamination and cause life threatening harm to consumers and irreparable damage to the business. Nippon Paint FLOOR-PRO carries a wide range of coatings, including a series of highly resilient, polyurethane screed that are non-tainting, withstand thermal shock, hygiene, chemical resistant, durable and available in anti-slip finish.



Total Carpark Coating Solutions from Basement to Roof

Ground and basement level carparks face a variety of challenges such as rising moisture, chemical contaminants and dirt that can impact the installation, durability and performance of coating system. Intermediate and roof decks are prone to sun and rain, unlike ground and basement level. Hence, having the right coating system will aid in overcoming the challenges.

We offer epoxy cementitious temporary moisture barrier with water-vapour permeable coating system for basement and ground level. We also have solar reflective coating system which exhibits high solar energy reflectivity, less heat build-up, resulting in improved thermal comfort. This is in line with Singapore Green Plan 2030. Nippon Paint FLOOR-PRO carpark coatings are designed to handle abrasion and chemical resistant and are easy to maintain. It is also available in a wide range of colours and in anti-slip finish.



Waterproofing Solutions for Building Construction

Waterproofing protects the structures, assets and occupants by creating a barrier which prevent water ingress into the building envelope. With growing population and limited land area, buildings are now constructed very close to one another and the traditional open cut construction method is no longer feasible. The rise of zero-lot-line construction methods such as Contiguous / Secant Bored Pile or Diaphragm Wall calls for a blind-side positive waterproofing system to cater to this demand. Nippon Paint's PROOF-SEAL 1301 HDPE Membrane offers Developers, Architects and Consultants the solution to blind-side waterproofing. Constructed with a composite of HDPE and weather resistant protective coating over the pressure sensitive adhesive, the membrane offers high adhesion to concrete which prevents water ingress, vapour permeance and lateral migration of water.



Headquartered in Singapore, Pacific Forest Products has expanded greatly from our humble beginnings in 1988 into a multi-faceted one focused on 3 main activities: pre-fabrication of timber components, timber manufacturing and trading of hardwoods. The company is currently focused on manufacturing and distribution of the sustainable timber product, ONEWOOD, a highly durable substitute for natural hardwood products.

ONEWOOD is a Homogeneous Reconstituted Timber (HRT). It is made by upcycling wood fibers from sustainable fast-growing plantation trees to form a big block of hardwood material that looks and feels exactly like natural hardwood. ONEWOOD is manufactured to imitate the year ring of a tropical tree, so when it is processed it looks just like natural oak or teak.

With certification from the Singapore Green Label and the Singapore Green Building Council, ONEWOOD's features such as water resistance, fire resistance (TUV SUD PSB - Product Listing Scheme CoC for Class B / Class 0 Equivalent Fire Ratings), termite resistance and outstanding dimensional stability is an ideal material sought after by developers, architects, designers and furniture makers.

Onewood Decking



ONEWOOD Outdoor Decking system consists of solid homogeneous reconstituted timber which enables re-sanding and refurbishing works after years of wear. Resistant to water, heat, termite with superior dimensional stability, Onewood is suitable for heavy traffic area such as beach clubs, resorts and condominium deckings. Available in Class 1 Fire Rating (BS 476 - Part 7) and Class B-fl, s1 (EN 13501 -1)

Onewood Facade and Cladding

Using Onewood for facades such as screens and cladding adds warmth, ambience and character of every space. Produced in large blocks of 300mm wide by 5 meters long, ONEWOOD can push the boundaries of timber for facade use.



Wall and ceiling cladding in tongue and groove profile improves installation and preserves the aesthetic look for such works. ONEWOOD's dimensional stability allows the production of 9mm thin claddings that reduces the load of interior ceiling at commercial and residential spaces. Available in Class 1 Fire Rating (BS 476 - Part 7) and Class Bs1, d0 (EN 13501-1)











Onewood Kitchen and Vanity Countertop

An increasingly popular trend for timber countertop and vanity countertops to create a modern touch yet evergreen, ONEWOOD have properties of water and heat resistance to withstand the high usage in bathrooms, kitchens and bar tops.

A wide availability of dimensions (300mm / 600mm / 900mm / 1200mm in widths), the premium sized planks allow minimal seamless joinery exhibiting the beautiful grains of ONEWOOD. Available in Class 1 Fire Rating (BS 476 - Part 7) and Class B-fl, s1 (EN 13501 -1)



-  www.playpoint.asia
-  jason@playpoint.com.sg  (65) 9859 3109
-  <https://www.facebook.com/playpointasia?mibextid=ZbWKwL>
-  [playpointasia](#)  [Playpoint asia](#)
-  [Playpoint asia](#)
-  71 Ubi Crescent Singapore, Singapore 408571

Founded in 2001, Playpoint is an award-winning playground and landscaping consultancy. We are experienced designers, engineers, safety inspectors, architects, educators and landscapers. We've spent the last two decades pushing the boundaries of playground and landscape design. We understand the joy of play and create experiences that are multi-sensory, educational, thrilling and safe.



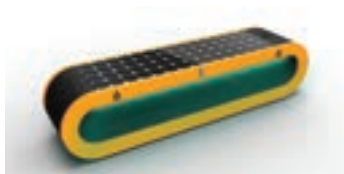
FICUS PLAY TREE

Banyans are known for being meeting points for merchants and villagers because of their huge and generous shade. A banyan tree seed lands on a host tree, and then grows around the host. When the host eventually dies, the banyan tree that remains has an empty core with column structures surrounding it. Drawing inspiration from these characteristics, we've integrated exciting play experiences within the many facets of this tree – kids can enjoy exploring the canopy, lounging among the branches, climbing the dangling roots and sliding out the hollow trunk, among others.



CLIMBING PARCOUR

Elevated climbing parkour combined with play equipment placed between the trees, and four cocoon pods, which are the crossing points of the elevated play, lounge hangout and lookout point all at once – hovering at almost five meters above ground level. An adventurous play for active kids indeed.



SOLAR BENCH

Besides providing a resting or outdoor lunch spot, the smart bench also lets you charge your phone and stay connected to the Internet thanks to the integrated USB port and wireless chargers.

- ✉ admin@polygandesign.com.sg
- ☎ (+65) 6368 1678
- in www.linkedin.com/company/polygan-design-pte-ltd
- 📍 76 Sungei Kadut Street 1 Singapore, 729375 Singapore



Polygan Design specializes in fire-rated door packages for commercial and residential projects. Be it in timber or metal, our highly customizable options include, but are not limited to:

- Concealed frame doors
- Glass paneled timber doors
- Hold-open doors
- Stone clad doors
- Doors with acoustic values (STC)

This coupled with appropriate ironmongery and hardware conforming to current industry standards makes us a one-stop solution for all your door requirements.

FIRE RATED DOORS



Certified to BS EN (SS 332:2018), Polygan Design has the following COCs for our fire rated doors:

Metal – 1hr / 2hr / 4hr

Timber – 1hr / 2hr

Glass – 1hr

These are accompanied with hardware which have been tested and can be utilized with said doors in the appendix.

CONCEALED FRAME DOORS











Designed to achieve a frameless and trimly look for a presentable design purpose.

We have different types of concealed frame doors, each addressing different functions and able to meld with the wall structure for a seamless look.

DOORS WITH ACOUSTIC VALUES (STC)



Using our in-house acoustics lab, we can conduct our R&D internally to ensure bespoke designs will be compliant with on-site performance. We have successfully tested for acoustic values up to STC 55.

-  en.rockfon.international
-  enquiry@rockfon.com
-  (+65) 6577 0344
-  [Rockfon_Official](#)
-  <https://www.facebook.com/rockfonofficial/>
-  <https://www.youtube.com/RockfonOfficial>
-  <https://www.linkedin.com/company/rockfon-as>
-  7 Tuas Avenue 1, Jurong Town, Singapore 639492



We are Rockfon. The world's leading acoustic company. Every day we're inspired to innovate with sound solutions that help people, think, rest, and enjoy life more. The student struggling to hear. The businessperson trying to concentrate. The couple wanting an intimate conversation over dinner out. Focusing on their wellbeing inspired our beautiful range of colours and styles, so now places that sound great, can also be uplifting, calming, or inspiring. And it expanded our vision to create fire safe, hygienic, and even light reflecting solutions for healthier, happier workspaces.



Rockfon® Mono® Acoustic

A unique design solution, perfect for ceilings and walls. This is our most innovative acoustic ceiling solution, adding a timeless touch to the interior. It can be shaped to suit your creativity – from domes to vaulted ceilings, from curves to origami shapes. It also provides 87% light reflection and 99% light diffusion, generating lightness to the interior while reducing energy usage during the day.











Rockfon Blanka®

Rockfon Blanka offers the best-in-class acoustics, combined with a super white surface that has high light reflection and light diffusion properties, creates a comfortable indoor environment with exceptional acoustics. In fact, the surface draws natural light 11% further into space than many other ceilings. The range also comes in thicknesses of up to 40mm, which is ideal for controlling noise in high activity spaces.



Rockfon Eclipse® Customised

Bring personality, style, and acoustic excellence to your interiors with custom-designed ceiling islands – available in any colour and shape. Manufactured to Rockfon's high standards, this product line doesn't just transform acoustics, it also allows you to bring unique identity and design to your clients' spaces.

-  <https://www.rockwool.com/asia/>
-  suzana.salman@rockwool.com
-  (+65) 9232 2507
-  <https://www.facebook.com/rockwoolasia/>
-  [rockwoolasia](https://www.instagram.com/rockwoolasia)
-  <https://www.youtube.com/channel/UCF6kIOjNUZTm-I8Trd3gN8w>
-  <https://www.linkedin.com/company/rockwool-asia/>
-  No. 7 Tuas Avenue 1, Jurong Town Singapore, 639492



Releasing the natural power of stone

We are committed to enriching the lives of everyone who comes into contact with our solutions. Our ambition is to empower everyone to rise to the development challenges of modern living. By using stone, one of the world's most abundant natural resources, we can make a lasting impact across generations.

From classrooms to stadiums, land to landmarks, people need spaces not only to dream big, but to act on those dreams, making the world a better place for everyone.

ROCKWOOL Safe 'n' Silent Pro



Stone wool insulation materials for Partition & Ceiling Application

ROCKWOOL Safe 'n' Silent Pro insulation is used to fill the space within partition walls to significantly improve the sound and fire-resistant qualities of any residential or commercial property.

ROCKWOOL Cool 'n' Comfort

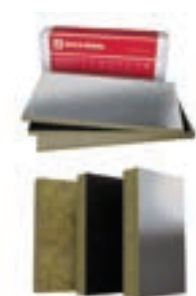


Stone wool insulation materials for Metal Roofing System

As heat penetrates the building - potentially raising temperatures to uncomfortable levels. Poor insulation can be costly for property owners, as spending on cooling the buildings can be expensive and not environmentally friendly.

To avoid costs and improve living conditions, using ROCKWOOL Cool 'n' Comfort stone wool to insulate a pitched roof is among the most popular construction methods of today. Effective insulation can not only help enhance comfort but help reduce air-conditioning costs by up to 40%.

ROCKWOOL Concrete Soffit System



Stone wool insulation materials for concrete Soffit to prevent condensation

Soffit insulation, especially those of non-combustible material, is particularly suited to ensure effective fire resistance, while providing excellent thermal performance for the soffit system. The insulation also prevents surface and interstitial condensation when applied in concrete car park soffits and similar applications or where temperature differences between two separated compartments are significant, such as buildings with air conditioned server room, data center or cold storage facilities.

- <https://www.signify.com/en-sg>
- sonia.teo@signify.com
- [\(+65\) 9673 3412](tel:+6596733412)
- [signifycompany](https://www.instagram.com/signifycompany)
- <https://www.facebook.com/philipslightingsingapore/>
- <https://www.youtube.com/@SignifyCompany>
- <https://www.linkedin.com/company/signifycompany/>
- 622 Lor 1 Toa Payoh, Philips APAC Centre, Singapore 319763



Signify, formerly known as Philips Lighting, is the world leader in lighting for professionals, consumers and lighting for the Internet of Things. Our innovations contribute to a safer, smarter, and more sustainable world. With a presence in over 70 countries, we unlock the extraordinary potential of light for brighter lives and a better world. We achieved carbon neutrality in our operations in 2020, have been in the Dow Jones Sustainability World Index since our IPO for six consecutive years and were named Industry Leader in 2017, 2018 and 2019.

NatureConnect



NatureConnect by Signify brings the benefits of natural light indoors. The NatureConnect lighting innovation by Signify is built on proven Biophilic Design principles to reconnect us to the outside world. It mimics the natural patterns of daylight indoors to create comfortable, engaging, and attractive environments. Its modularity enables versatility in the lighting layout, ranging from 1.2 x 1.2 metres to 1.2 x 3 metres.

Luminous Textile



Soft content, soft sound, and soft touch. Color Kinetics' Luminous Textile enables you to create dynamic spaces that enhance the atmosphere and improve acoustics. It is a configurable, high-quality, and unique lighting system that integrates multi-coloured LEDs seamlessly within beautiful fabric panels that also soften sound. Our Content Management software enables you to create, edit, and upload your own dynamic videos to the Luminous Textile panels.

OneSpace



Color Kinetics' OneSpace liberates you from the constraints of conventional ceiling design to achieve your uncluttered, minimalistic vision. OneSpace integrates LED lights with textiles to improve the acoustics of a room. It delivers excellent uniform light distribution for an enhanced daylight experience, which makes it a perfect functional light for any interior. For versatility, OneSpace is available in tunable white, ranging from 2700 K to 6500 K, and with sizes up to 9.9 metres to tailor the light exactly to your needs.



Set up in 2000, we're 23-years glass processor who specialized in:

- Facade curtain wall ; skylight; shopfront; Railing. Residential glass; Interior showerscreen & partitions & public area
- Various challenging Curve glass and Curve staircase
- Green energy: VIG(vacuum glass) & BIPV for Vertical curtainwall

Curtain wall glass (low-e DGU): lowest SC can go to : 0.19



- In Singapore, we've finished building : BCA. Frizer. Fragrance Hotel.
- Under finish building : Sanofi, Siltronic. 7002 AMK.

Various challenging Curve Laminate and Curve DGU & Ceramic Frit and Digital printing



- Finished Curve DGU: Flora Fantasy at Garden by the Bay
- Finished Curve Laminate: T2 new Immigration Hall and Arrive Hall. Jewel Railing (flat & Curve).
- Surbana-Jurong Campus Railing (flat & Curve)
- Will do project : Legend shopfront (Curve Lami & Curve DGU)

Residential & Condo glass (Min SC: 0.31)



- Under finished building : Park Nova at Orchard
- Will do project : Dunmon Resi, Bukit Batok Condo



OPSH® has come a long way from a hardware supplier to a principal manufacturer of OPSH® products. Incorporated in 1983, our company has gone through a long history of evolution and takes pride in the products that our in-house R&D team has come up with. We have identified the issue of space constraints of urban living and decided to transform to help provide solutions for space saving and has since earned several trademarks under us, with OPSH® as the main brand.

The design aesthetics and the functionality of OPSH® products are built according to feedbacks and experience of our customers for over 20 years. We pride ourselves as a company who desires to innovate our products and to cater to the needs of our clients. OPSH® promotes the modern art of fine living and strives to aggrandize the lifestyle of our users.



OPSH Sena Collection

OPSH® Sena collection embraces natural light while segregating spaces within spaces. It takes on a detached form of magnificence, going beyond the typical mindset of a wardrobe or cabinet. Constructed with sustainable yet luxurious materials, it integrated functionality with aesthetics. OPSH® Sena collection is the versatile and modular system cabinet that enables you to create different designs in different spaces.



OPSH Luxus Collection

OPSH® Luxus Series is the embodiment of ritzy satino coloured poles and oak melamine board that brings more warmth into spaces. It comprises the combination of fixtures, fittings & furniture to provide storage space solutions for living spaces. It demonstrates flexibility in the aspects of height adjustments, as well as wide varieties of the modules and accessories required by the user.



OPSH Romani Kitchen Collection

OPSH® Romani Kitchen Collection emphasies on the different use of materials to enhance the modern luxurious style. Coupled with functionality and quality, OPSH® Romantica Kitchen Collection is the quintessential choice for many projects. Marrying the natural materials such as wood and stones with engineered materials like glass and aluminium give Romani Collection a perfect balance in aesthetics.

- 🌐 <https://www.switchzmart.com/basalte-in-singapore/>
- ✉ seenu@switchzmart.com
- ☎ (+65) 9105 2493
- 📍 7 Harrison road #01-00, Singapore 369650



Switchzmart brings you smart automation system, premium and luxurious products with most unique technology of automation system for Smart home, Guest Room Management System for Hotels, Video door entry, multi room audio and video. Energy efficient offices and green Building and security Solutions provider for various applications with IOT added.

Adelante



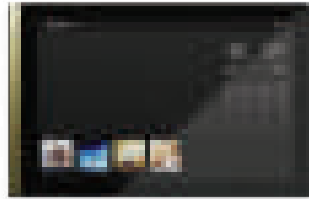
"We now bring our sophisticated design from inside your home, to your front door!"

Adelante is our luxury door phone for Basalte Home. It has a modular design with different options like access control all available in our high-quality finishes. Your door phone is no longer a necessity. It is a design statement perfectly integrated into your Basalte Home. The first look the first moment at your doorstep. You know you have arrived at a remarkable place.

Specification:

- 5.5" full HD OLED touch display with super-high contrast.
- Physical doorbell button.
- Modular design with every option at your fingertips like a security camera, badge reader, fingerprint recognition and so much more.
- Multiple cameras
- Installation on-wall or on a separate pole
- Perfectly integrated into your Basalte home

Lena



Access your entire home on the full HD 10.1" touchscreen.

Lena is now completing the range as flagship touch display for Basalte Home! She comes in 12 premium finishes to perfectly match any high-end interior.

Fibonacci



Inspired by Fibonacci's golden ratio, our switch brings natural beauty to the heart of your home. Its avant-garde looks elevate even the most sophisticated interiors.

- Capacitive touch technology
- Additional multitouch functionalities
- Integrated multicolour led, temperature sensor & thermostat logic and proximity sensor
- Fits common single gang outlet boxes in the US
- Available in 2/4-button configuration
- Integrates with KNX, Crestron & Lutron



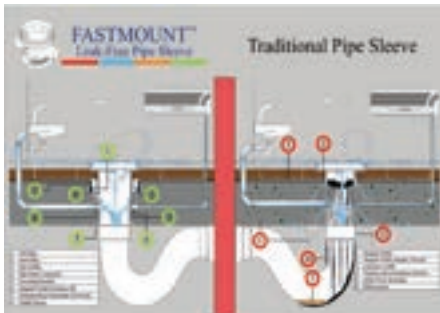
Tesvila is a commercial hand dryer End-to-End solution provider. We deliver a complete functional solution from upgrading of the existing hand dryers in a shopping mall etc. to integrating our hand drying solution into a new commercial project. Unlike conventional hand dryer manufacturers which sell only the hardware, we see a project through from beginning to end and supply everything needed to create a workable solution. On top of that, we provide comprehensive maintenance to every hand dryer for the full 5 years inclusive of labour and parts. Our public toilet End-to-End solution also extends to other product range like the ultra-durable flushing WC and urinal etc. Tesvila Pte Ltd is a BCA-registered company under the ME 12 Work head which allows it to tender Plumbing & Sanitary works for government sectors. Together with its sister company DP Plumbing & Sanitary Services Pte Ltd, Same Director, also BCA registered, they have a combined workforce of over 40 personnel. Among them, they have an Engineer, 3 PUB Licensed Plumbers, 2 draftspersons and a group of supervisors managing the pool of well-trained technicians. They have completed over 1,000 plumbing and sanitary projects comprising commercial, hotel, hospitals, condominiums, landed houses, etc. since 2001. As of April 2023, there are 45 projects underway and 34 under maintenance period.



FASTMOUNT offers innovative solutions to address common issues faced by buildings, such as water leaking and clogged waste pipes. During the construction and usage stages, various challenges arise, including membrane flow, lime penetration, and weak connections. These can lead to ruptured pipe sleeves, cracked waterproof membranes, and water leakage problems, compromising the building's longevity.

To overcome these challenges, FASTMOUNT introduces cutting-edge products like the Out Ring, Inner Ring, Puddle Flange, Mounting Bracket, and Pipe Drain Connector. These solutions provide efficient and reliable connections, preventing leaks and improving drainage. By implementing FASTMOUNT's innovative components, construction quality is enhanced, disruptions are minimized, and long-term durability and performance of buildings are improved.

The below drawing show the traditional pipe sleeve and FASTMOUNT difference



Logo of FASTMOUNT





- www.t2960.com.sg
- contact@t2960.com.sg
- (+65) 9655 2833
- @twoninesixotrading
- <https://www.facebook.com/groups/309277468581/>
- <https://www.youtube.com/@SignifyCompany>
- <https://www.linkedin.com/company/2960sg>
- 21 Tuas West Avenue Singapore, 638435 Singapore

Two Nine Six O Trading Pte Ltd is a reputable company that specializes in the distribution of construction materials such as sealants, specialty coatings, mechanical building joints, fire stopping systems, fasteners, and decorative panels. They also offer an array of value-added services such as logistical support, technical services, quality assurance and checks, and after-sale services.

The company's dedication to excellence through innovation, technical proficiency, and unwavering commitment has earned them a reputation as a trusted supplier. Their team of technical experts, who have extensive experience, continually explore new and innovative ways to better serve their clients.

DNP Aluminium Decorative Panels

DNP



DNP Aluminium Decor Panel, is renowned for its high-value added features that add a touch of elegance to any architectural project. This premium aluminium panel series offers unparalleled versatility and durability, making it ideal for a wide range of applications, from interior spaces to semi- exterior and exterior environments. With its unique and rich expressions, the DNP Aluminium Decor Panel enables designers and architects to create stunning visual effects, elevating the aesthetics of any space to new heights.

GE Momentive Performance Coatings



GE Momentive offers a range of silicone performance coatings for various applications. Their products include Elemax Air and Water Resistant Barrier Coating, which helps control air and water flow in buildings, improves air quality, stabilizes temperature control, and reduces energy consumption. They also offer high-performance architectural coatings that create a seamless elastomeric membrane, protecting against environmental elements and graffiti. Additionally, their Enduris silicone roof coatings provide excellent protection against UV rays, waterproofing, and temperature extremes, extending the life of roofs and saving on energy costs.

STI Firestopping Solutions



STI is a leading global company that develops fire containment systems, safeguarding multiple industries like healthcare, power generation, data and communications infrastructure, and modular and mass timber construction from fire and smoke damage. They specialize in providing firestopping solutions for façade, penetration in walls, floors and ceiling. They also provide adaptable firestopping systems that can accommodate dynamic building movements due to factors like wood shrinkage, settling, and seismic activity.



Viega is one of the leading companies in the field of Plumbing & Sanitation systems. Founded over 122 years ago in Germany, the company is owned and managed by family members of fifth generation. Viega's main product ranges 100% quality from Germany are: Concealed flushing cisterns for wall-hung water closet (WC); Design award flushing plates; award winning shower channels for creative bathroom design. Viega has developed its product range with renowned designers, technology, quality behind wall to ensure the highest level of operating comfort, functionality, safety and reliability.



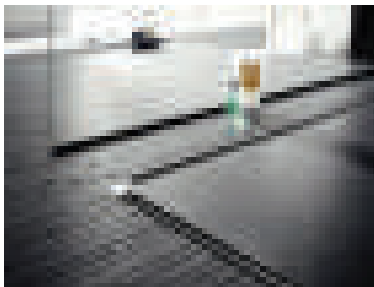
Viega Prevista Concealed Flushing Cistern

Easy installation, maximum design freedom: We poured all our experience and your ideas into the development of our new pre-wall system. The result is Viega Prevista, the new generation of pre-wall technology. It will save on working time and offers you optimum levels of comfort.



Viega Visign Flush Plates

From veneer wood finishes, brushed stainless steel, glass and high-grade plastic: The new Visign flush plates come in a wide variety of different materials. They offer the ideal design for every taste, as well as featuring state-of-the-art technology. All flush plates are compatible with the Prevista cistern and can mostly be installed without the use of any tools.



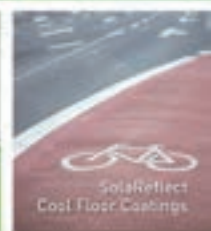
Viega Advantix Vario Shower Channel

Design freedom made easy: The strength of the Viega Advantix Vario Shower Channel is their individuality, allows individual bathroom design without compromise and made-to-measure shower channel. Without any major effort, it can be cut to length or extended from 30cm to 280cm. Installing around a corner, free standing in a room or directly on the wall is no problem. Attractive color variations and prize-winning design stainless steel grate allows a seamless transition into any tiling.

FLOOR-PRO SYSTEM

Nippon Paint FLOOR-PRO Systems are designed to fit for every environment, to last. The wide range of products and systems allows us to cover industrial, commercial, residential and specialty areas

- ✓ **Antimicrobial Hygenic PU Screeds for Food Factories**
- ✓ **High Performance Floor Coatings for Carparks**



- Antimicrobial Hygenic PU Screeds
- Carpark Coatings
- Chemical Resistant Floor Coatings
- Cleanrooms & Laboratories
- Decorative & Aesthetics Requirements
- High Performance Epoxy Floor Coatings
- Loading & Unloading Floor Areas
- SolarReflect Cool Floor Coatings
- Sports Floor Coatings
- Static Sensitive Floors
- Wet & Dry Floor Areas
- UV Resistant Floor Coatings

For more information, call us at +65 6265 5355 or email us at customer@nipponpaint.com.sg

Scan
Here to
Enquire



